



meridianTM

fenestrated aorta

Patient Specific • 14F Delivery • Repositionable Fenestrated Endograft

Revolutionary Design, Extraordinary Advantages

Ancillary components
have been used for
illustrative purposes.
These are sold separately
to the MeridianTM device

Accurate Positioning, Ultra-Low Profile

Meridian™ 14F Endograft System represents a new approach to FEVAR, adding value to the endovascular portfolio and allowing physicians to treat a broader range of patients.



Collaborative Device Design Process:

- Efficient and effective team work to design the optimal device for your patient
- Capability to conduct procedural simulation in challenging anatomies
- 3D anatomical modelling for complex cases



In House Engineering, Design and Manufacture:

- Combined Clinical and Engineering teams working together
- Responsive and reactive to your needs
- Your choice of single or double renal fenestrations
- Internal iliac fenestrations also available



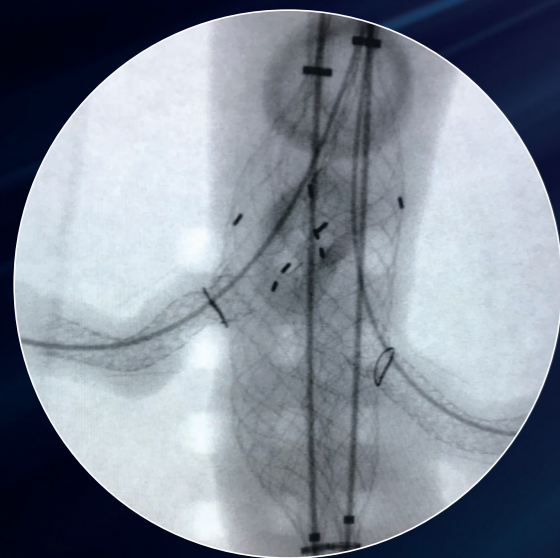
Rapid Response and Turnaround Time:

- Simplified planning process
- Tailored to your patients' exact anatomical specifications
- Quick turnaround time



Full Case Support from an Experienced Team of Clinical Specialists:

- Experienced clinical support at all stages from planning, design and implant



Familiar Altura™ Design:

- Unique braided nitinol stent
- Standard Altura™ delivery system
- Rotational and longitudinal tolerance to align with target vessels
- Unique application to re-intervene in previous aortic repair
- Other versatile applications

Meridian™ Endograft System is a non-standard device for the treatment of specific patients. It is not CE marked and is supplied on a named-patient basis only.

Fully Repositionable for Accurate Placement:

- Unique design allows a more flexible approach to target vessel cannulation
- Bilateral endografts may be repositioned before and after target vessel cannulation
- Target vessels are cannulated before the device is deployed
- Familiar aortic delivery system provides controlled deployment



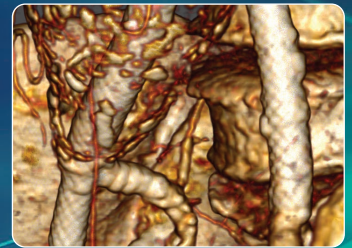
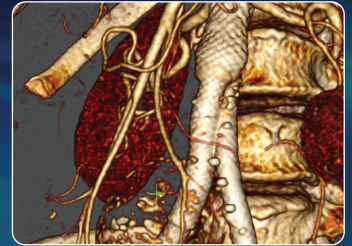
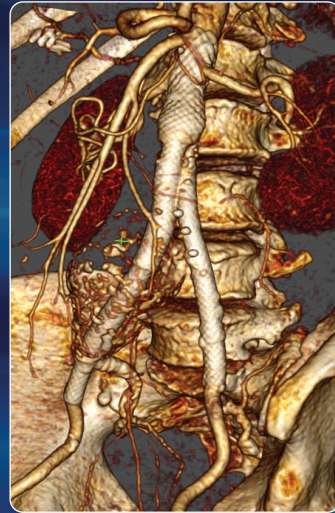
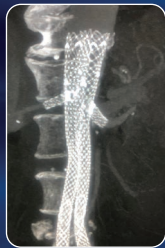
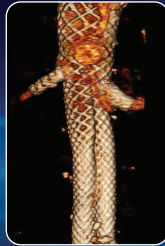
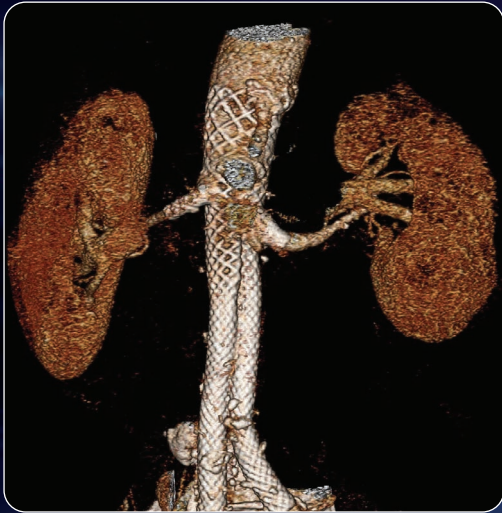
Ultra Low-Profile 14F Delivery System:

- Designed to improve access and minimise vessel trauma
- Intuitive endograft delivery ensures controlled and accurate placement
- Built-in contrast injection ports simplify the procedure
- Better navigation through tortuous and narrow vessels

Streamlined Case Planning with Flexible Design Process

Meridian™ used to treat a previous surgical bifurcated graft with proximal aneurysmal disease *

Meridian™ - Iliac **



* Pictures courtesy of Dr. Raghu Lakshminarayan, Hull Royal Infirmary

** Pictures courtesy of Dr. Alexander Massmann, Saarland University Hospital

For planning and designing of your Meridian™ device, please contact your local Lombard Medical representative or email meridian@lombardmedical.com.

The Meridian™ Endograft System is a non-standard device for the treatment of specific patients. It is not CE marked and is supplied on a named-patient basis only.



Lombard Medical Limited, Lombard Medical House, 4 Trident Park, Didcot, OX11 7HJ
Tel: +44 (0)1235 750800 Email: globalinfo@lombardmedical.com Website: www.lombardmedical.com

All cited trademarks are the property of their respective owners in respective countries.
These devices should only be used when prescribed by a licenced physician. Indicators, contraindications, warnings, potential adverse events and directions for use can be found in Instructions for Use and product labelling supplied with each device.
The promotion, distribution or sale of these devices is prohibited in countries where the registration certificates or any other licences have not been obtained. This brochure is not intended for use in aforesaid countries. Any information may be changed without prior notice.

Not Available for sale in the United States.

©2023 Lombard Medical Limited. All rights reserved. PN04206. Version D